

The specification of 6 Band Channels Outdoor High Power Signal Jammer , Prison Cell Phone Jammers

Model: VBE-6ODM

VBE-60DM signal Jammer device is a high-tech product developed by our company in combination with advanced technology at home and abroad, aiming at the continuous development of communication system, according to the meticulous development of domestic and foreign communication hand section. Within a radius of 50 to 200 meters, all 2G / 3G / 4G mobile phone signals and televisions, remote control bombs and WiFi signals, blocking eraser, text pen, invisible headphones, watches cheating, glasses probe wireless signals, etc., can be effectively blocked (interfered with) inside and outside the room. Put an end to cheating students, ensure the quiet venue, prevent bomb attacks, protect dignitaries.



Function

Can Jamming CDMA , GSM , SCDMA , DCS(1800MHz), PCS(1900MHz),PHS,3G,4G,Wifi,GPS,VHF/UHF, Etc.

Features

- Adjustable power;
- The fuselage uses the aluminum material, the heat conductivity is good, the heat dissipation is quick;
- Can be used continuously, stable work, long life;
- Continuous shielding signal, harmless to human body;
- Signatures are targeted for shielding and do not interfere with other signals.
- Good waterproof, can be installed outside;
- More shielded signal segments, can be selected according to customer needs;
- With network control, can be centralized monitoring of multiple computers

Application places

- Mainly used in examination rooms, prisons, gas stations, mobile phone bombs, oil depots, LPG stations, detention centers, interrogation rooms, courts,
- Reform-through-labour teams, conference rooms, movie theaters, churches, libraries, school dormitories;
- Special security and confidential occasions (confidential office, negotiation room, mobile vehicles, mobile political and business dignitaries guarding the scene;
- All kinds of military sites and other prohibited places to use mobile phones.

Technical Specifications

	Channel	Frequency Band	Output Power
Frequency Band(Optional)	CH1	CDMA:870-880MHz	50dBm
	CH2	3G:2010-2025MHz	50dBm
	CH3	4G:1855-1880MHz	50dBm
	CH4	GSM:925-960MHz	50dBm
	CH5	DCS:1805-1850MHz	50dBm
	CH6	4G:2300-2335MHz	50dBm
Total Power	600W		
Power Adjustable	5 stalls available for regulation		
Temperature Range	-20°C ~ + 55°C		
Humidity Range	30%-95%(non condensing)		
Power Supply	AC 110-220V / DC-48V		
Size	602 x428 x 272 mm		
Weight	50 kg		
Watertproof Grade	IP65		
Accessories	Power Line/Manual/Installation Parts		

Case Show

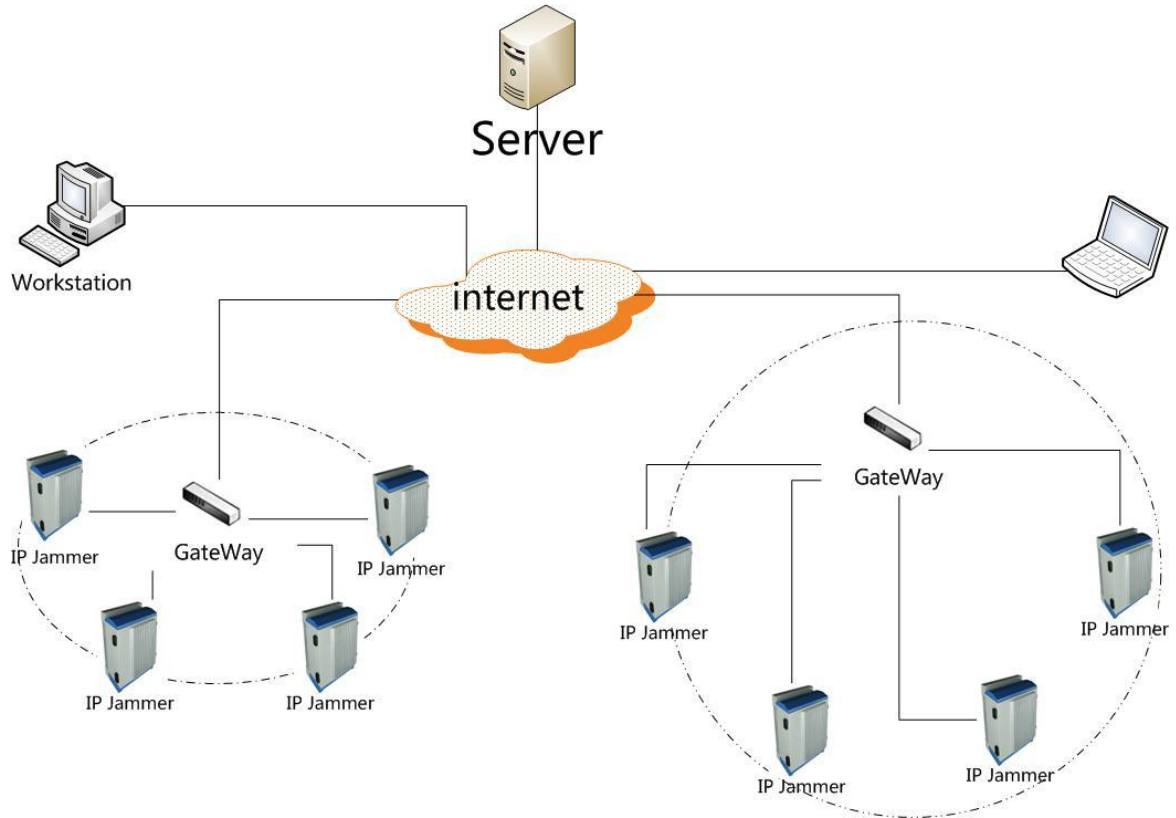


One prison in Honduras



One prison in Brazil

Jammer Remote monitoring System



Schematic diagram of network topology structure